



MONTHLY MEMBERSHIP PROGRESS REPORT

District 42

Results as of: 11/30/2018

GMT: MAHESH CHITNIS

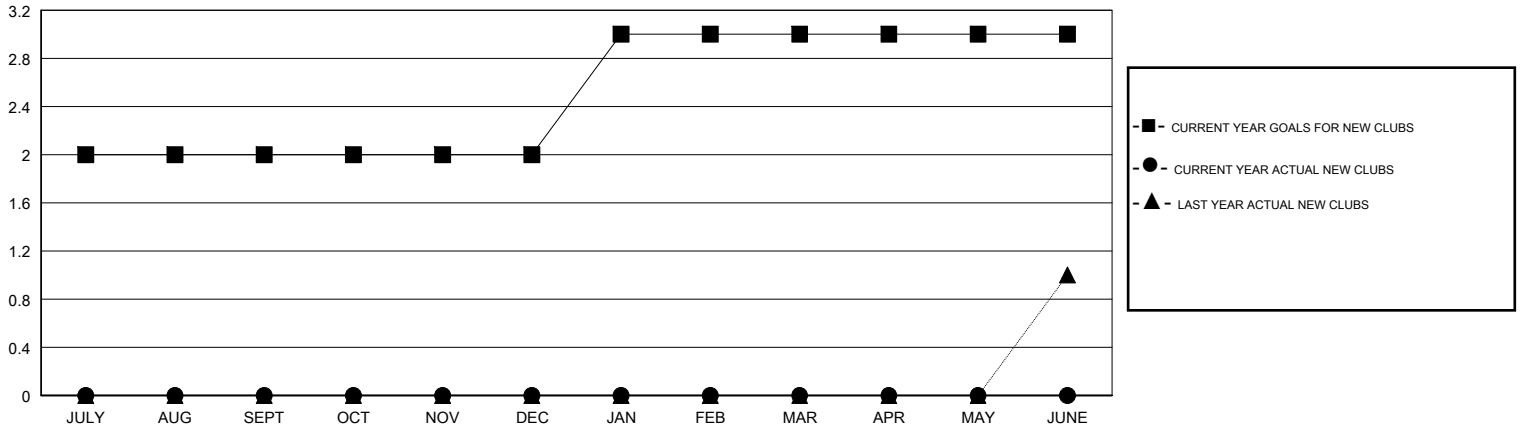
LOCATION RHODE ISLAND

GMT CA

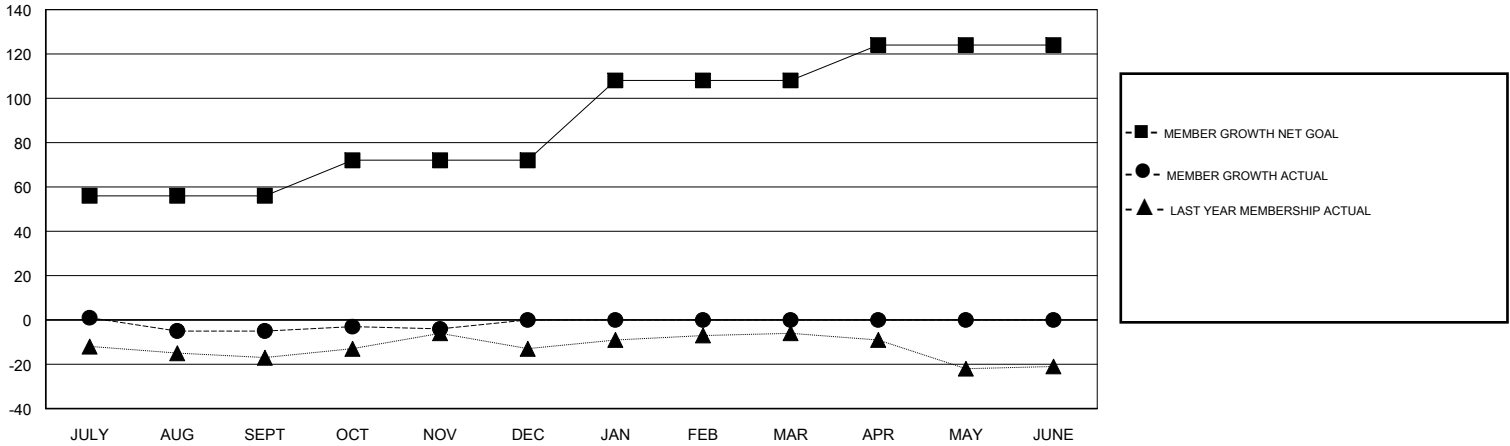
Clubs			
RESULTS FOR 2018-2019			
QUARTER	NEW CLUB GOAL	NEW CLUBS	DROPPED CLUBS
JULY/AUG/SEPT	2	0	0
OCT/NOV/DEC	0	0	0
JAN/FEB/MAR	1	0	0
APR/MAY/JUNE	0	0	0

Members			
RESULTS FOR 2018-2019			
QUARTER	MEMBER GROWTH NET GOAL	MEMBER GROWTH ACTUAL	DROPPED MEMBERS ACTUAL (including transfers)
JULY/AUG/SEPT	56	10	14
OCT/NOV/DEC	16	17	15
JAN/FEB/MAR	36	0	0
APR/MAY/JUNE	16	0	0

GOALS AND ACTUAL NEW CLUBS CUMULATIVE



GOALS AND ACTUAL MEMBERS CUMULATIVE



DROPPED CLUBS: 0	9 CLUBS OF 30 ADDED 1 OR MORE NEW MEMBERS	<u>GENDER DISTRIBUTION</u>	
DROPPED MEMBERS		MALE	812 (71.99%)
DECEASED	2	FEMALE	316 (28.01%)
CLUB CANCELLED	0	Women Percentage Fiscal Year Goal: 30%	
OTHER	27	CLICK HERE FOR CUMULATIVE MEMBERSHIP DATA	
TOTAL	29	TOTAL FAMILY UNIT MEMBERS	135
		FAMILY MEMBERS PAYING HALF DUES	71